

## “An Expectation Of Success”



Founded in 1964



### A Message From Our CEO

Thank you for your interest in Ranch Hope— a nationally-accredited community of healing, providing trauma-informed services to youth and families throughout New Jersey and the Delaware Valley.

We have always defined the word *hope* as “an expectation of success.” Ranch Hope is a ministry that *expects* success in all that we strive to do. We are continually motivated by the values taught to us by our Lord and Savior, Jesus Christ. By sharing unconditional love and building relationships with everyone in whom we come in contact, it is our goal to follow each of our Core Values.

After reviewing this brochure, I ask that you consider becoming a member of our Ranch Hope “family,” either professionally, as a volunteer or through your financial support. Each of these memberships is vital to sustaining our ministry of giving *hope* to youth and their families.

In Him,

David L. Bailey, Jr.  
Chief Executive Officer



### Our Core Values

**Quality:** We will pursue the highest standards in fostering environments that transform lives.

**Partnership:** We will build relationships and collaborate with all who are stakeholders in this ministry.

**Empowerment:** We will listen and respond to, as well as advocate for, the voices of our youth, families and staff to make responsible decisions and improve processes.

**Integrity:** We will conduct ourselves in an honest, fair and ethical manner.

**Stewardship:** We will operate efficiently and make responsible decisions to meet our fiscal, spiritual, social and emotional obligations.

**Compassion:** We will display caring, sensitivity and respect in all relationships.

**Safety** – We will behave in a manner that protects the physical, psychological, spiritual and emotional well being of others.

### Mission Statement

*To foster environments  
that transform lives  
empowered through  
Christ-centered love and  
compassion.*

Those of us who are strong and able in the faith need to step in and lend a hand to those who falter, and not just do what is most convenient for us.

Romans 15:1



*First youth in 1964*



*The Hopefuls Gospel Group*



*Our First Trustees*

## OUR HISTORY

In 1962, Reverend Dave Bailey and his wife, Eileen, had it in their hearts to serve youth with adverse childhood experiences (ACEs). Through constant prayer, servant leadership and community support, we opened our doors to the first 12 boys in 1964.

For more than 55 years, Ranch Hope has proactively met the needs of adolescent children through structured programming in a residential setting. Thousands of children and their families have benefited from residential treatment, special education, day school, shelter services and summer camp programs.



*Founder Rev. Dave Bailey Sr. (left) and CEO Dave Bailey Jr. (right) celebrating Ranch Hope's 55th Anniversary*

## CONTENTS

History.....	2
Residential Treatment Services.....	3
Specialty Care Services.....	5
Strang School.....	6
The HILLS Program.....	7
The Shelter of Hope.....	8
Camp Edge.....	9
Social Enterprises.....	10
Ministry Resources.....	11
Volunteer Opportunities.....	12
Next Steps.....	13
Contact Information.....	14

*Revised December 2019*

## RESIDENTIAL TREATMENT SERVICES (RTS)

*Ranch Hope has been providing RTS to adolescent youth at its Alloway Campus in Salem County, New Jersey, since 1964.*



Ranch Hope's residential treatment services are nationally accredited and accept referrals from throughout New Jersey, Delaware and Pennsylvania. We serve adolescent males between the ages of 12 and 17, who require additional support in addressing emotional, behavioral and educational needs. All youth receive treatment centered on trauma-informed care and utilize the Nurtured

Heart Approach© in a family-like environment. The staff-to-youth ratio in the Residential Treatment Center (RTC) is 1:5, and youth are supervised 24 hours a day.



Much like a college campus, the staff at Ranch Hope form a supportive community for the youth. Youth attend school on and off campus, learn daily life skills and receive employment training with various job opportunities. Youth participate in extracurricular activities, including team and individual sports, and are involved in

voluntary religious experiences. Each youth's treatment and future discharge plan is individualized and lasts on average a period of 9 to 11 months. 60% of youth served by Ranch Hope are reunited with their families, compared with the state-wide average of 42%.



## RTS *Continued*



Upon arrival in our community, each youth is assigned a therapist. Our Master's level therapists are licensed and provide individual and group counseling on a weekly basis, along with family counseling to assist with family reunification. Family visits and participation in family counseling sessions are encouraged. Therapeutic home visits and family visitation are scheduled weekly.

Ranch Hope's Strang School assists youth with either an Individualized Education Plan (IEP) or a Standard Educational Program on campus. Each youth's educational plan is defined by his specific need. Depending on their educational plan, students may attend a local public or vocational school.

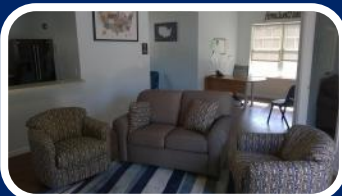


Our youth follow a daily schedule and contribute to both the campus and the local community. While weekdays are primarily for attending school, the Rec Therapy provides a full range of allied therapeutic recreational activities, and the Treatment Liaison Team provides daily life skills and group activities.

4

## SPECIALTY CARE SERVICES

Upon arrival to our community, each youth is assigned a therapist. These Master's level therapists provide intensive individual and group counseling. Staff-to-youth ratio is 1:4. Youth are mentored by staff trained in trauma informed care, attend school on campus or in community, receive life skills training, participate in rec therapy activities that include team sports and are involved in voluntary spiritual development.



## Specialty Care Criteria

### Admission Criteria:

- ~Male
- ~Ages 12 to 16 years old

### Clinical Criteria Examples:

~Classification: Victim Reactive, Conduct Disorder, Oppositional Defiant Behavior, Bipolar Disorder, Autism Spectrum Disorder, Youth on the Spectrum (who are verbal and ambulatory), Substance Abuse/ Use Needs, History of Trauma, Attachment Disorders, Fetal Alcohol Syndrome.

### Educational Criteria:

- ~Individualized Education Plan (IEP)
- ~Alternative Virtual Education Classroom
- ~Campus and In-Community Options

For more information, please call (856) 935-1555, or  
E-mail [info@ranchhope.org](mailto:info@ranchhope.org).

5

# STRANG SCHOOL

Strang School is a state-approved, Middle States accredited, on-campus school. Each student's educational program is individualized. Students participate in a minimum of six hours of academics spread throughout their day. Classes are small to allow for specialized attention. All educators are experienced with teaching students who receive additional treatment services.

Strang School recognizes that students perform on different levels and ensures that all students are challenged in order to develop their full academic, technical and vocational potential. It is the mission of Strang School to offer innovative, practical and effective education for students with special emotional needs.

## Strang School Goals

- Provide challenging individualized academic programs
- Transition students to their local home school district in the shortest time possible
- Improve student behavior patterns and self-management utilizing the Nurtured Heart Approach ©
- Strengthen family involvement through meetings and family counseling sessions
- Maintain a high staff-to-student ratio in order to promote more personal interaction
- Develop employment and life skills for job placement
- Provide scholarships to local institutions of higher learning



Middle States Association  
Commissions on Elementary  
and Secondary Schools



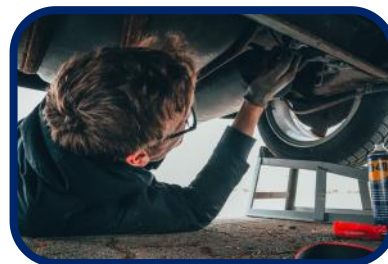
6

## The HILLS Program

### *Hope for Independent Living & Life Skills*

Ranch Hope's HILLS Program is a non-licensed, semi-supervised, supportive housing program with services targeted for 18- to 21-year-old males who are referred from the New Jersey Adolescent Housing Hub and/or the NJ Division of Child Protection and Permanency (DCPP).

The program is designed to assist young men with learning daily living and life skills, employment coaching and job shadowing, furthering their education, preparing them for independent living, and reunification with family or other permanency arrangement.



The length of stay in HILLS varies by the participant's individual need (typically 12 to 15 months). Participation in program services are a mandatory requirement to maintain residency in the program.

7

# THE SHELTER OF HOPE

When youth come to the Shelter of Hope, addressing their immediate needs is our priority by building a foundation of safety and trust. Since 2004, we have provided welcoming shelter, counsel, therapeutic recreation and educational programming as a light unto their path.



Youth access the Shelter of Hope for a variety of reasons: family or foster disruption, minor juvenile justice issues, trafficking or other situations that have caused displacement. The Shelter of Hope is under 24-hour supervision by our professionals who utilize trauma-informed care. Our team partners with families, DCP, family court and others to help youth transition during this temporary time in their lives.

8

## CAMP EDGE

Experience our summer camps, overnight lodging, retreat facilities and miles of wooded trails for running, walking and biking on 78 acres of private property. Climb, swing and fly through the treetops, while team/trust building on our adventure course with your students, corporate team or family members! Relax while boating, kayaking, fishing or swimming in Lake Feyl.

### Summer Camps

**L.E.A.D.E.Rs Camp:** Law Enforcement And Developing Emergency Responders Camp

**Warrior's Edge Camp:** An obstacle loaded adventure camp that will challenge the warrior within

**Adventure on the Edge Camp:** An action packed week of climbing, zip-lining, lake time, team activities and much more



For more information about scheduling an event, summer camp, ropes course, archery tag, mountain biking or our annual events, please call (856) 279-2519, or email us at [CampEdge@ranchhope.org](mailto:CampEdge@ranchhope.org).

9



# SOCIAL ENTERPRISES

## Thrift Store

Located at the Cowtown Farmer's Market, the Thrift Store is an example of our many community partnerships and employment training locations for our youth. By donating to or purchasing items at the Thrift Store, you are supporting our mission to children, youth and families, as well as the Ranch Hope Radio Podcast. Give us a call at (856) 769-2394, and we will come pick up your donated items (must live within 50 miles of the store).



## Graphic Design

Our on-campus print shop is one way the classroom meets the real world. Our youth assist in designing logos, graphics and custom screen printing projects. Customers from all over order apparel and totes, and our graphic design class does the design and printing! All proceeds are poured back into different Ranch Hope programs and activities. For more information or to place an order, call (856) 935-1555.

## Catering

Our catering program is a great way for our youth to gain hands-on life skills, such as customer service, work ethic, food safety, team work and communication. The proceeds from each event go into different Ranch Hope programs. Some of our events include: banquets, parties, weddings, funerals, fundraisers, luncheons and much more! For more information or to schedule an event, call (856) 935-1555.



10

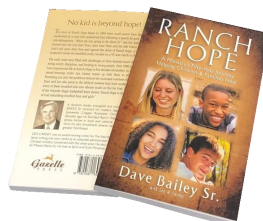
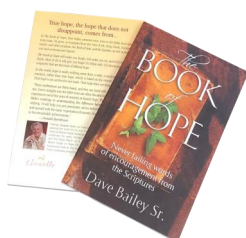
# MINISTRY RESOURCES

**The Wondrous Story:** Listen in to this 15-minute podcast, which provides news, music, interviews and a devotional message. An updated list of where/when you can listen to the podcast each day can be found by visiting [www.ranchhope.org/project/radio-ministry/](http://www.ranchhope.org/project/radio-ministry/). Current and archived podcasts can also be heard online 24/7 by visiting [www.oneplace.com](http://www.oneplace.com).



## The Book of Hope

Rev. Dave Bailey, Sr., provides the reader with a Daily Devotional book looking at the word *hope* throughout scripture.



## The History of Ranch Hope

The Founder of Ranch Hope, Rev. Dave Bailey, Sr., shares of the joy and trials of beginning a non profit ministry and its over fifty year journey helping children and families heal.

## Let the Little Ones Come to Me

Rev. Dave Bailey, Sr., wrote this book for those that have walked through the valley of the shadow of death at the loss of a child. It is his touching memorial to his daughter Lee Ann and his testimony of faith.



For more information or to purchase any of the books, please visit [www.ranchhope.org](http://www.ranchhope.org).

# VOLUNTEER OPPORTUNITIES

There are many ways to volunteer with Ranch Hope. Volunteers are *vital* to keeping the ministry moving forward- as individuals or as members of a group.

**Service opportunities include, but are not limited to the following:**

- Volunteers work directly with youth through structured mentoring or tutoring experiences.
- Members of auxiliaries, located throughout New Jersey, assist through fundraising and service projects.
- Corporate outreach volunteers help with a wide variety of service projects.
- Camp Edge volunteers assist with maintenance, repair and ropes course training.
- Thrift Store volunteers receive and inspect merchandise, arrange shelf displays and handle sales.

For more information on how you can become a volunteer with Ranch Hope, call **856-935-1555**.



**\*\*Additional training and/or background checks are/may be required.\*\***

## NEXT STEPS

How YOU can make a difference...

- **Prayer:** Above all else, we need our supporters to continually pray for our youth, staff and mission.
- **Volunteer Opportunities:** Volunteers are vital to keeping the ministry moving forward. Please see page 12 for a list of volunteer opportunities.
- **Gifts of Cash:** Monetary donations can be scheduled monthly, as a multi-year pledge or one-time donation can be made via check or online.
- **Gifts of Appreciated Securities or Real Estate:** Generally, the income tax deduction may be taken for the full fair market value of the gifted property and no capital gains tax will be due.
- **Estate, Planned or Deferred Gifts:** Many of these opportunities provide income for life to you and a loved one. Please contact the CEO for more information.
- **Gifts of Merchandise:** The Ranch Hope Thrift Store accepts donations of goods and merchandise.
- **Capital Campaign:** The *Building Our Future Today* campaign assists with the construction of our new treatment homes for youth. Naming opportunities are available for the homes and/or rooms within the homes.
- **Company Matching Plans:** When making a donation, request the matching gift from your employer by contacting your Human Resources Department today!

### Donations Provide Additional Services

Chaplaincy Program  
Team and Individual Sport Opportunities  
Equestrian Instruction, Scouting, Choir, Drama Team & 4-H  
Adventure-based Programs at Camp Edge  
Field Trips and other Educational Opportunities  
Scholarships to Graduates for College

*For more information, please call the  
**Office of Development at**  
**(856) 935-1555 x125.***

# CONTACT US

## Ranch Hope Inc.

P.O. Box 325 | 45 Sawmill Road  
Alloway, New Jersey 08001-0325  
Phone: (856) 935-1555  
Administration Fax: (856) 935-5189  
Email: [info@ranchhope.org](mailto:info@ranchhope.org)  
Website: [www.ranchhope.org](http://www.ranchhope.org)

## Ranch Hope Thrift Store

770 Harding Highway (Rt 40)  
Piles Grove, NJ 08098  
Phone: (856) 769-2394  
For store hours and to see what we can  
and cannot accept, please visit:  
[www.ranchhope.org](http://www.ranchhope.org).

### Shelter of Hope

Phone: (856) 935-1555

### Camp Edge

P.O. Box 325  
26 Camp Edge Rd.  
Alloway, NJ 08001  
Phone: (856) 279-2519  
[CampEdge@ranchhope.org](mailto:CampEdge@ranchhope.org)

### Strang School

Phone: (856) 935-1555  
Fax: (856) 935-5189

Follow us on:



### Ranch Hope, Inc.

P.O. Box 325 | 45 Sawmill Road  
Alloway, New Jersey 08001-0325  
(856) 935-1555  
[www.ranchhope.org](http://www.ranchhope.org)